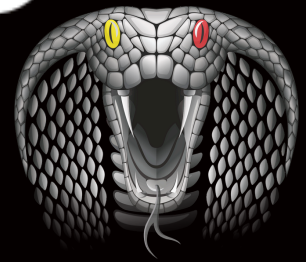


MIXING RATIO BY WEIGHT



COBRA Black

COBRA Black		COBRA Hardener	
L	g	L	g
0.3	383	0.10	100
0.6	765	0.20	200
1.0	1275	0.33	330
2.0	2550	0.65	665
3.0	3825	1.00	1000

COBRA for Color

COBRA for Color		Pigment		COBRA Hardener	
L	g	ml	g	L	g
0.3	383	30 ÷ 45	33 ÷ 50	0.10	100
0.6	765	60 ÷ 90	66 ÷ 100	0.20	200
1.0	1275	100 ÷ 150	110 ÷ 165	0.33	330
2.0	2550	200 ÷ 300	220 ÷ 330	0.65	665
3.0	3825	300 ÷ 450	330 ÷ 500	1.00	1000

COBRA Black with the Anti-Slip Additive

COBRA Black		Anti-Slip additive		COBRA Hardener	
L	g	ml	g	L	g
0.3	383	50	80	0.10	100
0.6	765	100	160	0.20	200
1.0	1275	180	260	0.33	330
2.0	2550	350	510	0.65	665
3.0	3825	500	765	1.00	1000

COBRA for Color with the Anti-Slip Additive

COBRA for Color		Pigment		Anti-Slip additive		COBRA Hardener	
L	g	ml	g	ml	g	L	g
0.3	383	30 ÷ 45	33 ÷ 50	50	80	0.10	100
0.6	765	60 ÷ 90	66 ÷ 100	100	160	0.20	200
1.0	1275	100 ÷ 150	110 ÷ 165	180	260	0.33	330
2.0	2550	200 ÷ 300	220 ÷ 330	350	510	0.65	665
3.0	3825	300 ÷ 450	330 ÷ 500	500	765	1.00	1000